

# LE REX

SAS GOFOOD - Le REX de Toulouse

15 avenue Honoré Serres - 31000 Toulouse (FR)

+33 (0)5 61 38 57 71 - [contact@lerextoulouse.com](mailto:contact@lerextoulouse.com)

---

## TECH & HOSPITALITY RIDER

### v. 2026.3

#### **Managing Director | Programmer**

Mathieu Doumerc

+33 (0)6 12 75 25 73

[mathieu@lerextoulouse.com](mailto:mathieu@lerextoulouse.com)

#### **Technical Director | Light Designer**

Paul Aniorté

+33 (0)6 76 51 82 52

[technique@lerextoulouse.com](mailto:technique@lerextoulouse.com)

## ACCESS & LOADING

### ACCES

Metro B

Bus n° 29, 31, 45

*Stops Jeanne d'Arc, Compans Cafarelli*

### LOAD IN | LOAD OUT

In front of main entrance

15 avenue Honoré Serres

31000 Toulouse

### PARKING

No parking

---

## HOSPITALITY

### BACKSTAGE

1 room

NO SMOKING ALLOWED

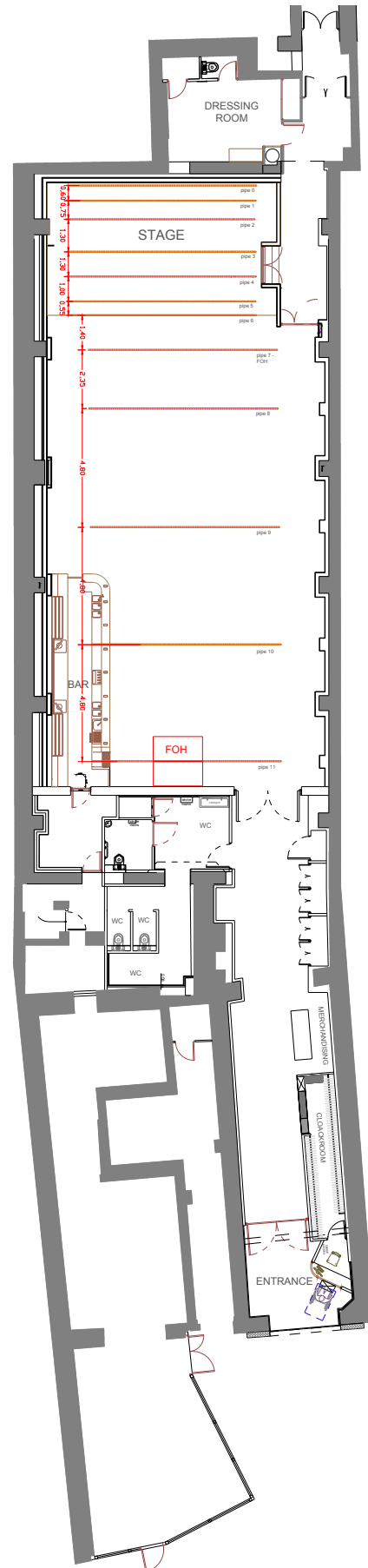
1 shower

1 WC

WiFi access everywhere

### MERCHANDISING

1\* 4m space in entrance hall



## LE REX

### CAPACITY

489 stand  
231 sit

### VENUE DIMENSIONS

18,5m\*11m  
175m<sup>2</sup> + bar

### STAGE SPECIFICATIONS

Stage dimensions : 9m\*5,40m  
Show space : 7m\*5,40m  
Stage height : 0,60m  
Crowd barriers all stage long

### FOH AREA

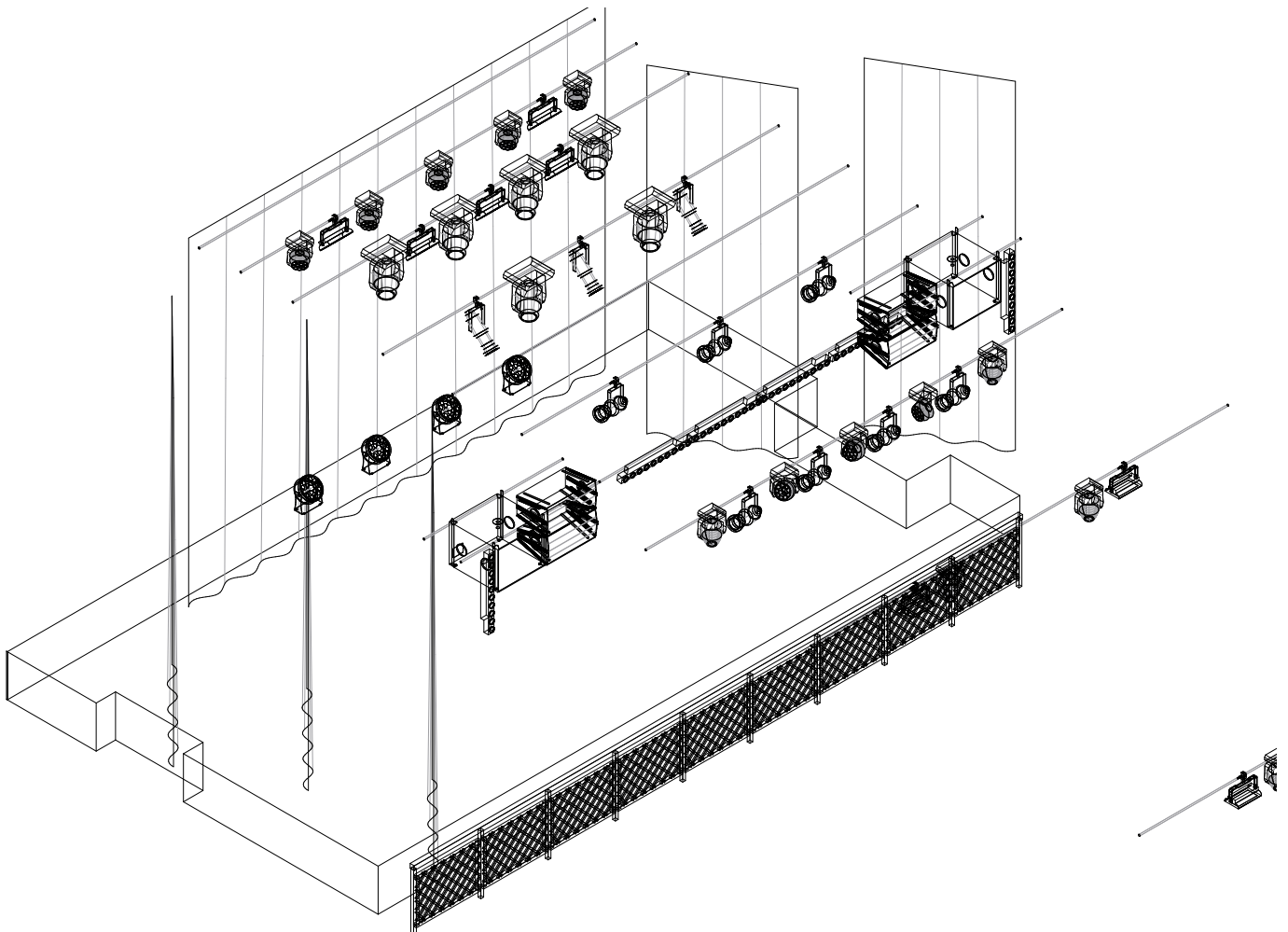
3\*1,50\*0,40m for light and sound  
Lighting and sound control are operated from back and center of the venue

### STAGE STRUCTURE

7 pipes Ø50mm 100 daN/m  
Clearance 3,80m  
Not motorised

### VENUE STRUCTURE

5 pipes Ø50mm 80 daN/m  
Clearance 4m  
Not motorised



## **SOUND**

### **PA SYSTEM : L ACOUSTICS**

2\* A15 Focus & 2\* A15 Wide  
2\* X8 Fill  
4\* KS21 (air)  
1\* KS28 (ground)

### **MONITORS**

4\* X12 L Acoustics + LA4X  
2\* 115XT HiQ + LA4X  
2\* Yamaha DXR12  
No monitor control desk

### **PATCH**

1\* MIDAS DL32  
1\* Behringer S16  
1\* Analog 16/8 (stage)

### **MIXING CONSOLE**

1\* MIDAS M32

### **POWER SUPPLY & BACKLINE**

(shared w/ light)  
5\* 16A mono  
1\* 32A tri (P17 CEE) stage left /  
house right  
No backline available

### **STAGE EQUIPMENT**

2\* rolling risers 2m\*1m\*1m  
4\* rolling risers 2m\*1m\*0,30m  
Back drop pipe Ø50mm L 4m

### **MICROPHONES & DI**

06\* Shure SM58  
07\* Shure SM57  
01\* Beyerdynamic M88  
01\* Shure Beta 91 A  
01\* Shure Beta 52  
07\* Sennheiser E604  
03\* Sennheiser E609

01\* Sennheiser E614  
04\* Oktava MK012

07\* Millenium Active DI  
01\* Klark Teknik DI 22P  
01\* BSS Audio AR-133

### **KEYBOARD & MIC STANDS**

05\* Straight tall stands  
13\* Tall stands

10\* Small stands  
02\* Keyboard stands

## LIGHT

### POWER SUPPLY

(shared w/ sound)

5\* 16A mono

1\* 32A tri (P17 CEE) stage left /  
house right

### LIGHT CONTROL

grandMA2 onPC v.3.9.60.28

+ command wing

### PATCH

DMX Univ 1 for stage (fixed)

DMX Univ 2 for venue (fixed)

DMX Univ 3 & MA2 2port node  
free & available on stage

### GENERIC LX FIXTURES

04\* SUNSTRIPS

04\* ENCORE FR150Z

01\* CHANDELIER

### LED FIXTURES

13\* CAMEO Thunder Wash 600

04\* CAMEO FLAT PRO 12

02\* BEAMZ BAC300

### INTELLIGENT LX FIXTURES

06\* MARTIN RUSH MH 1 PROFILE+

08\* MARTIN RUSH MH 5 PROFILE

08\* MARTIN RUSH MH 6 WASH

10\* NICOLS SPRINTER BEAM 150

### LIGHT PLOT (see attached plots)

Please notice that this entire LX Fixtures list is permanent rig, **so house light plot is not modifiable.**

Additional fixtures can be brought within the limits of power supply available, and must be at your charge.

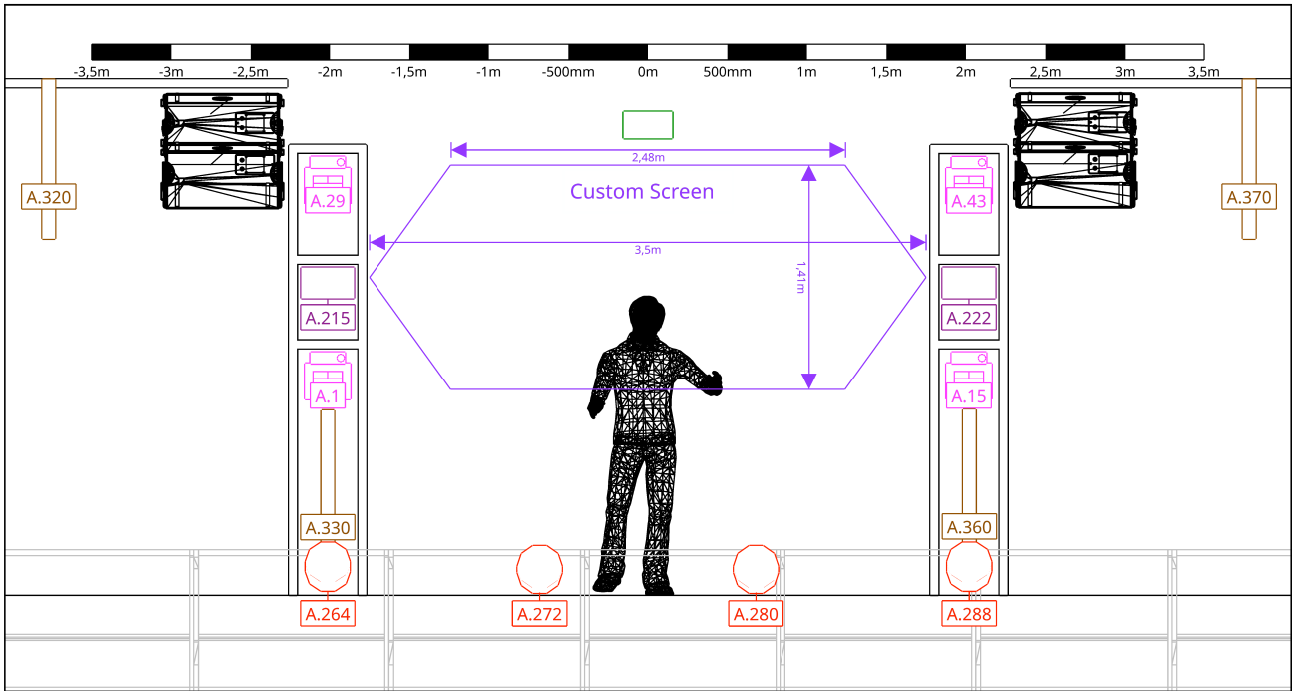
### FX

1\* Look Unique 2.1 Haze Machine

### VIDEO

1\* BenQ LU960 (HDMI at FOH)

1\* Backdrop screen 4x3m or Custom screen 3,5x1,41m (see plot)



Stage Front - Symbol key

- Showtec Sunstrip Active DMX - 10ch - (4)
- Martin Rush MH 6 Wash - 14ch Mode 0 - (4)
- Kvant ClubMax 2000 FB4 - (1)
- Cameo Flat Pro 18 - 8ch - (4)
- Cameo Thunder Wash 600 RGBW - 7ch Mode 2 - (2)

Stage Top - Symbol key

- Cameo Thunder Wash 600 RGBW - 7ch Mode 2 - (5)
- Martin Rush MH 5 Profile - 16ch - (4)
- Martin Rush MH 1 Profile Plus - 17ch Mode 0 - (6)
- Martin Rush MH 6 Wash - 14ch Mode 0 - (4)
- BEAMZ BAC300 - 4-1ch - (2)
- BenQ LU960
- Look Unique 2.1 - 2ch - (1)
- Sprinter Beam 150 (10)

